



# Terpenes Profile

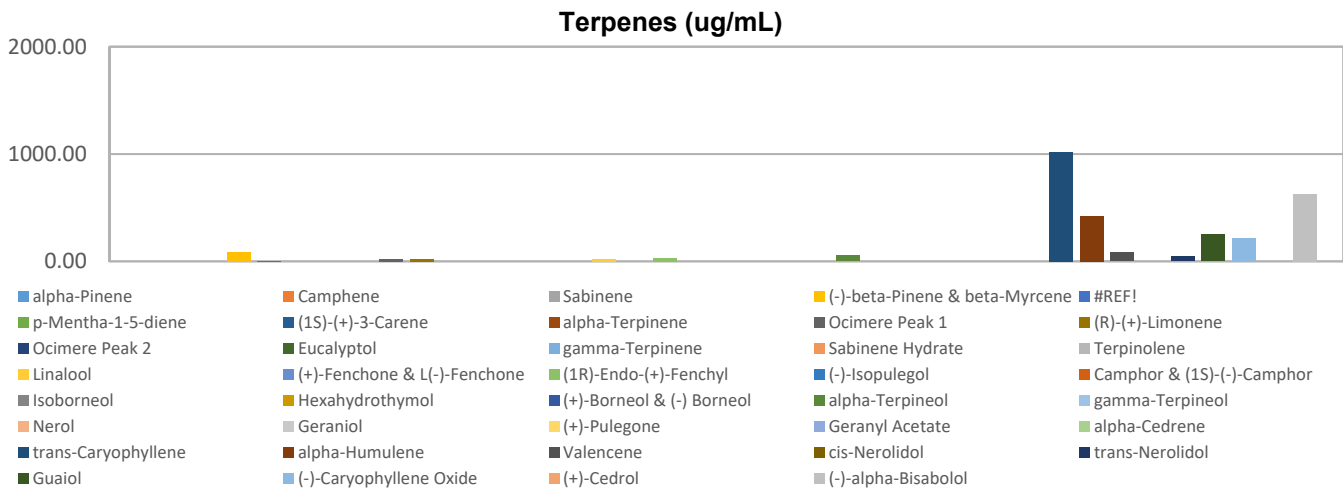
**Customer:** Appalachian Extracts  
**Customer Sample ID:** 2400 mg/60 mL  
**Laboratory Number:** 201906-0233  
**Extraction Technician:** DF  
**Analytical Chemist:** GB  
**Density (g/mL):** 0.956

| Extraction Date(s) | Analysis Date(s) |
|--------------------|------------------|
| 6/7/2019           | 6/7/2019         |

| Terpene                        | Results | Terpene                   | Results |
|--------------------------------|---------|---------------------------|---------|
|                                | ug/mL   |                           | ug/mL   |
| alpha-Pinene                   |         | Isoborneol                |         |
| Camphene                       |         | Hexahydrothymol           |         |
| Sabinene                       |         | (+)-Borneol & (-) Borneol |         |
| (-)-beta-Pinene & beta-Myrcene | 85.52   | alpha-Terpineol           | 53.99   |
| p-Mentha-1-5-diene             |         | gamma-Terpineol           |         |
| (1S)-(+)-3-Carene              |         | Nerol                     |         |
| alpha-Terpinene                |         | Geraniol                  |         |
| Ocimere Peak 1                 | 19.82   | (+)-Pulegone              |         |
| (R)-(+)-Limonene               | 23.22   | Geranyl Acetate           |         |
| Ocimere Peak 2                 |         | alpha-Cedrene             |         |
| Eucalyptol                     |         | trans-Caryophyllene       | 1016.41 |
| gamma-Terpinene                |         | alpha-Humulene            | 419.29  |
| Sabinene Hydrate               |         | Valencene                 | 81.18   |
| Terpinolene                    |         | cis-Nerolidol             |         |
| Linalool                       | 23.60   | trans-Nerolidol           | 44.93   |
| (+)-Fenchone & L(-)-Fenchone   |         | Guaial                    | 250.14  |
| (1R)-Endo-(+)-Fenchyl          | 28.13   | (-)-Caryophyllene Oxide   | 212.95  |
| (-)-Isopulegol                 |         | (+)-Cedrol                |         |
| Camphor & (1S)-(-)-Camphor     |         | (-)-alpha-Bisabolol       | 628.27  |

Reporting Limit is roughly 100 ug/mL depending on amount extracted.

Empty result indicates data is less than detection limit.



Altitude Consulting, LLC utilizes NIST traceable Reference Standards and Certified Reference Material to calibrate analytical instruments along with proven analytical methods. The methods are applied in the most ethical manner following good laboratory practice guidelines. The results of this report are based solely on the sample submitted and cannot be reproduced.

This report expires 30 days after analysis date.