



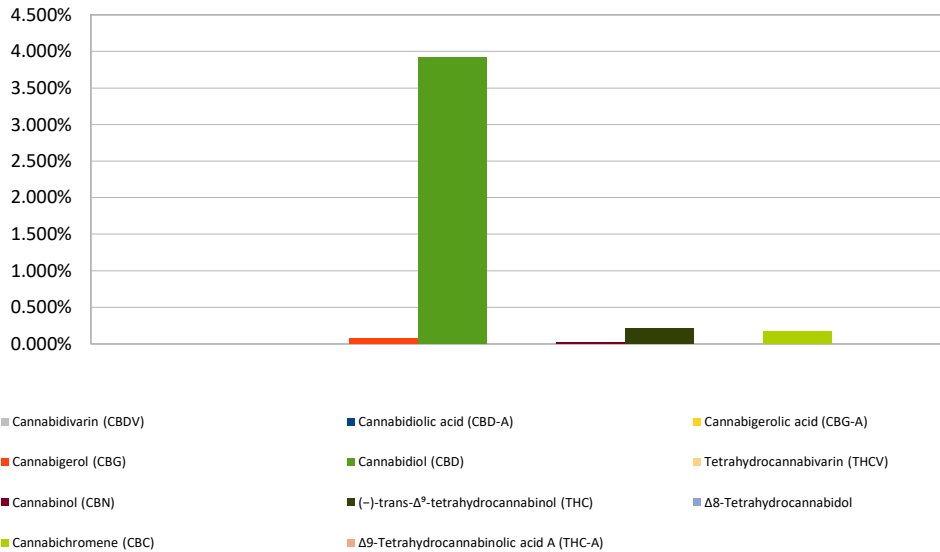
Cannabinoid Profile

Customer: Appalachian Extracts
Customer Sample ID: 2400 mg/60 mL
Laboratory Number: 201906-0233
Extraction Technician: DF
Analytical Chemist: CB
Servings per Bottle: 60.0
Density: 0.956

Extraction Date(s):	Analysis Date(s)
6/7/2019	6/7/2019

Cannabinoid (HPLC)	Results			
	LOD mg/g	Percent	mg/mL	mg/Bottle
Cannabidiol (CBD)	<0.1			
Cannabidiolic acid (CBD-A)	<0.1			
Cannabigerolic acid (CBG-A)	<0.1			
Cannabigerol (CBG)		0.079%	0.79	47.5
Cannabidiol (CBD)		3.914%	39.14	2348.7
Tetrahydrocannabivarin (THCV)	<0.1			
Cannabinol (CBN)		0.018%	0.18	10.8
(-)-trans- Δ^9 -tetrahydrocannabinol (THC)		0.205%	2.05	123.1
Δ^8 -Tetrahydrocannabinol	<0.1			
Cannabichromene (CBC)		0.174%	1.74	104.4
Δ^9 -Tetrahydrocannabinolic acid A (THC-A)	<0.1			
Cannabinoids Total		Percent	mg/mL	
Max Active THC		0.21%	2.05	
Max Active CBD		3.91%	39.14	
T. Active Cannabinoids		4.39%	43.91	
Total Cannabinoids		4.39%	43.91	
Ratios				
19.09 :1 CBD to THC		0.05 :1 THC to CBD		

Cannabinoid (%)



Altitude Consulting, LLC utilizes NIST traceable Reference Standards and Certified Reference Material to calibrate analytical instruments along with proven analytical methods. The methods are applied in the most ethical manner following good laboratory practice guidelines. The results of this report are based solely on the sample submitted and cannot be reproduced.

This report expires 30 days after analysis date.